

**DOCUMENT OF COMPLIANCE
FOR THE CARRIAGE OF DANGEROUS GOODS** "F"

Issued in pursuance of the requirement of
REGULATION II-2/19.4 OF THE INTERNATIONAL CONVENTION OF SAFETY OF LIFE AT SEA, 1974,
as amended,

under the authority of the Government of the

REPUBLIC OF THE MARSHALL ISLANDS

by GERMANISCHER LLOYD



Name of Ship	Distinctive Number or Letters	Port of Registry	Ship Type	IMO Number
FELICITAS RICKMERS EX MARUBA-FANGO	90135	Majuro	Container	9128087

THIS IS TO CERTIFY:

- That the construction and equipment of the above mentioned ship as specified in the appended schedule 2 was found to comply with the provisions of regulation II-2/19 of the International Convention for the Safety of Life at Sea, 1974, as amended.
- That the ship is suitable for the carriage of those classes of dangerous goods as specified in the appended schedules 1(a) and 1(b), subject to any provisions in the International Maritime Dangerous Goods (IMDG) Code for individual substances, materials or articles also being complied with.

This certificate is valid until 30th April, 2012.

Issued at Hamburg the 3rd day of May, 2007



Germanischer Lloyd



709

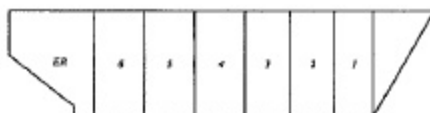
Günter Hölzer
Günter Hölzer

Kim S. Steingrube
Kim S. Steingrube

Note: There are no special requirements in the above-mentioned regulation II-2/19 for the carriage of dangerous goods of classes 6.2 and 7, and for the carriage of dangerous goods in limited quantities, as required in chapter 3.4 of the IMDG Code.

Schedule 1(a)

Spaces and numbers indicated in the plan are corresponding with the table below



Underdeck spaces

Class \ Hold	1	2	3	4	5	6	7	8	9
1.1 - 1.6	X	X	X	X	X	X			
1.4.S	P	P	P	P	P	P			
2.1	X	C ¹⁾	C ¹⁾	X	X	X			
2.2	P	P	P	P	P	P			
2.3	C	C	C	C	C	C			
3 FP < 23°C c.c.	X	C	C	X	X	X			
3 FP ≥ 23°C - ≤ 61°C	P	P	P	P	P	P			
4.1	P ²⁾	P ²⁾	P ²⁾	P ²⁾	P ²⁾	P ²⁾			
4.2	P ²⁾	P ²⁾	P ²⁾	P ²⁾	P ²⁾	P ²⁾			
4.3	C	C	C	C	C	C			
5.1	P ²⁾	P ²⁾	P ²⁾	P ²⁾	P ²⁾	P ²⁾			
5.2	X	X	X	X	X	X			
6.1 liquids	X	P	P	X	X	X			
6.1 liquids FP < 23°C c.c.	X	C	C	X	X	X			
6.1 liquids FP ≥ 23°C - ≤ 61°C	X	C	C	X	X	X			
6.1 solids	P ²⁾	P ²⁾	P ²⁾	P ²⁾	P ²⁾	P ²⁾			
8 liquids	P	P	P	P	P	P			
8 liquids FP < 23°C c.c.	X	C	C	X	X	X			
8 liquids FP ≥ 23°C - ≤ 61°C	C	C	C	C	C	C			
8 solids	P	P	P	P	P	P			
9	P ²⁾	P ²⁾	P ²⁾	P ²⁾	P ²⁾	P ²⁾			

P Indicates
PACKAGED GOODS
PERMITTED

C Indicates
PACKAGED GOODS
IN CLOSED FREIGHT
CONTAINERS
PERMITTED

A Indicates
PACKAGED
and BULK GOODS
PERMITTED

B Indicates
BULK GOODS
PERMITTED

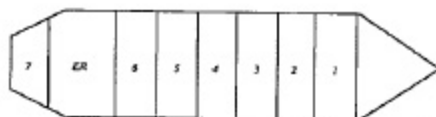
X NOT PERMITTED

Remarks related to the information in the table above as applicable:

- Note: 1) When carrying hydrogen and hydrogen mixtures, the cargo hold floodlights are to be isolated from the electrical supply from outside and to be secured against re-connection.
 2) If stowage in a "mechanically ventilated space" is stipulated by the IMDG-code, in closed freight containers.

Schedule 1(b)

Spaces and numbers indicated in the plan are corresponding with the table below



On deck spaces

Weather deck	ER	1	2	3	4	5	6	7 ¹⁾	8
1.1 - 1.6	X	P	P	P	P	P	P	X	
1.4.6	P	P	P	P	P	P	P	P	
2.1	X	P	P	P	P	P	P	P	
2.2	X	P	P	P	P	P	P	P	
2.3	X	P	P	P	P	P	P	P	
3 FP < 23°C c.c.	X	P	P	P	P	P	P	P	
3 FP ≥ 23°C - ≤ 61°C	X	P	P	P	P	P	P	P	
4.1	X	P	P	P	P	P	P	P	
4.2	X	P	P	P	P	P	P	P	
4.3	X	P	P	P	P	P	P	P	
5.1	P ¹⁾	P	P	P	P	P	P	P	
5.2	P	P	P	P	P	P	P	P	
6.1 liquids	P	P	P	P	P	P	P	P	
6.1 liquids FP < 23°C c.c.	X	P	P	P	P	P	P	P	
6.1 liquids FP ≥ 23°C - ≤ 61°C	X	P	P	P	P	P	P	P	
6.1 solids	P	P	P	P	P	P	P	P	
8 liquids	P	P	P	P	P	P	P	P	
8 liquids FP < 23°C c.c.	X	P	P	P	P	P	P	P	
8 liquids FP ≥ 23°C - ≤ 61°C	X	P	P	P	P	P	P	P	
8 solids	P	P	P	P	P	P	P	P	
9	P	P	P	P	P	P	P	P	

P Indicates
PACKAGED GOODS
PERMITTED

X NOT PERMITTED

Remarks related to the information in the table above as applicable:

- Note: 1) Between frames #-5 and #13
2) Except goods for which stowage "away from sources of heat" is stipulated by the IMDG code.

Schedule 2

Special arrangements acc. to SOLAS II-2/19

Clause	Special requirement	Remarks
1.1	Compliance with Reg. 10.7.2	<i>Fixed CO₂ system</i>
3.1.1	Immediate availability of water supplies	<i>Remote start of fire pumps from the wheel house</i>
3.1.2	Quantity of water delivered and arrangement of hydrants	<i>Provided</i>
3.1.3	Water cooling	<i>Not provided</i>
3.1.4	Cargo space flooding	<i>Not provided</i>
3.2	Sources of ignition	<i>Explosion protection of electrical equipment in #2 and #3 hold: IIC T4, IP 56, The cargo hold floodlights of IIB T4, IP 55 are capable of being isolated</i>
3.3	Fire detection and alarm system	<i>GL type approved sample extraction smoke detection and alarm system</i>
3.4.1	Mechanical ventilation	<i>#1 to #6 hold: two air changes/hour</i>
3.4.2	Safety of fans	<i>For #2 and #3 hold provided</i>
	Wire mesh guards	<i>Provided</i>
3.5	Bilge pumping	<i>For #2 and #3 hold additional bilge pump of 10 m³/h located in #3 hold</i>
3.6.1	Protective clothing	<i>4 sets</i>
3.6.2	Additional self-contained breathing apparatus	<i>2 sets in addition to fire-fighter's outfits</i>
3.7	Portable extinguishers	<i>Additional total of 12 kg dry powder for use on weather deck</i>
3.8	Insulation of machinery space boundaries	<i>Not provided Weather deck area between frames #13 and #24 is located above engine room.</i>
3.9	Water spray system	<i>N.A.</i>
3.10	Separation of ro-ro spaces	<i>N.A.</i>