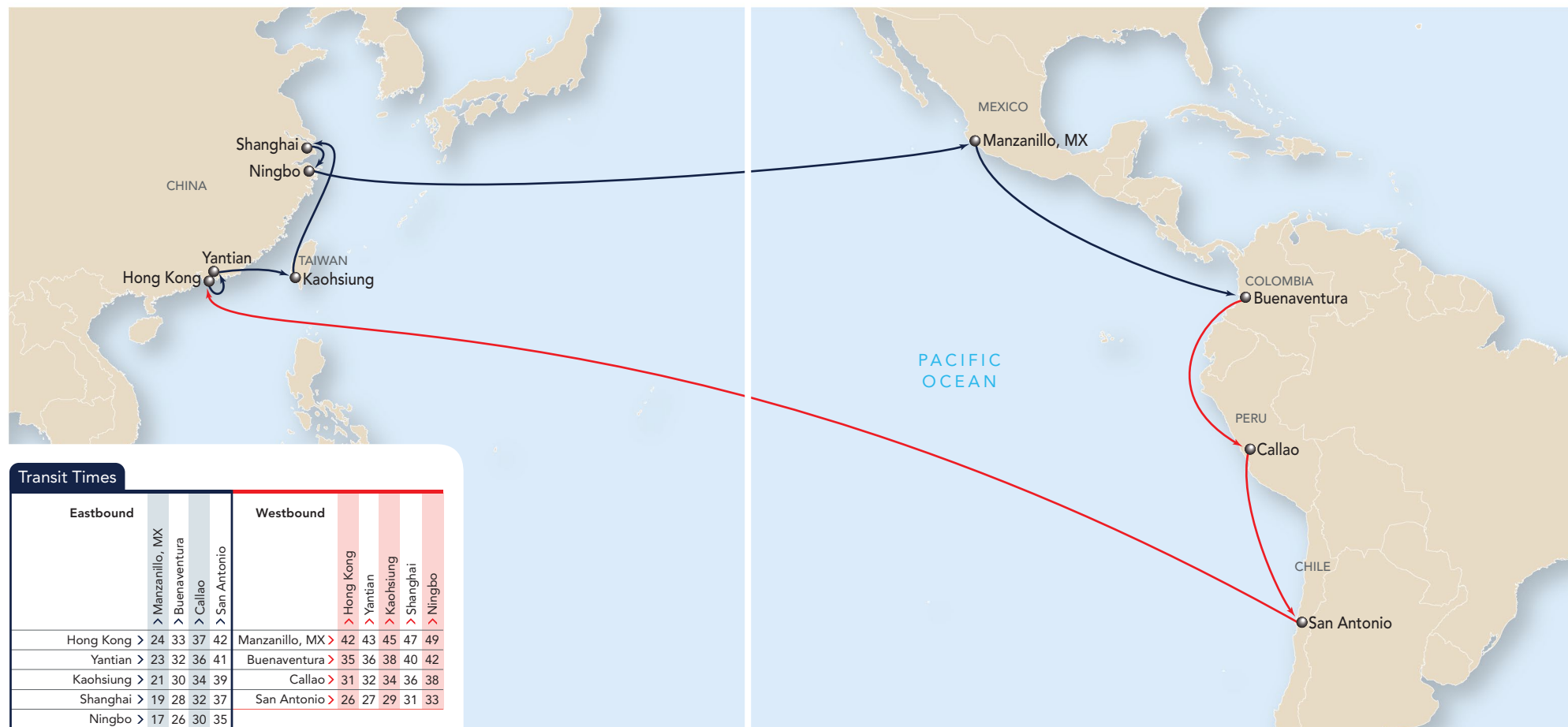


## THE APL ADVANTAGE

- Weekly direct service between China and Mexico, West Coast South America
- Fastest transit time from Central China to Mexico
- Complete network coverage of Central America market with multiple feeder services connecting at Manzanillo, Mexico
- Competitive transit time from Chile to China designed for transportation of fresh fruit



### Transit Times

|             | Eastbound        |                |          |               | Westbound        |           |             |            |          |    |
|-------------|------------------|----------------|----------|---------------|------------------|-----------|-------------|------------|----------|----|
|             | > Manzanillo, MX | > Buenaventura | > Callao | > San Antonio | > Hong Kong      | > Yantian | > Kaohsiung | > Shanghai | > Ningbo |    |
| Hong Kong > | 24               | 33             | 37       | 42            | Manzanillo, MX > | 42        | 43          | 45         | 47       | 49 |
| Yantian >   | 23               | 32             | 36       | 41            | Buenaventura >   | 35        | 36          | 38         | 40       | 42 |
| Kaohsiung > | 21               | 30             | 34       | 39            | Callao >         | 31        | 32          | 34         | 36       | 38 |
| Shanghai >  | 19               | 28             | 32       | 37            | San Antonio >    | 26        | 27          | 29         | 31       | 33 |
| Ningbo >    | 17               | 26             | 30       | 35            |                  |           |             |            |          |    |

### Port Rotation

| Eastbound      |  |             |        |             |        | Westbound    |  |             |        |             |        |
|----------------|--|-------------|--------|-------------|--------|--------------|--|-------------|--------|-------------|--------|
| Port           | Terminal (Tml)                                     | Transit Day | Arrive | Transit Day | Depart | Port         | Terminal (Tml)                                     | Transit Day | Arrive | Transit Day | Depart |
| Hong Kong      | Hong Kong Int'l Tml (HIT)                          | 00          | Sun    | 01          | Mon    | Buenaventura | Sociedad Portuaria Regional De Buenaventura (SPRB) | 34          | Sat    | 35          | Sun    |
| Yantian        | Yantian Int'l Container Tml (YICT)                 | 01          | Mon    | 02          | Tue    | Callao       | DP World Callao                                    | 38          | Wed    | 39          | Thu    |
| Kaohsiung      | Kaohsiung EMC Tml                                  | 03          | Wed    | 04          | Thu    | San Antonio  | San Antonio Tml Internacional                      | 43          | Mon    | 44          | Tue    |
| Shanghai       | Yangshan Deep Water Port Phase 1 Tml               | 05          | Fri    | 06          | Sat    | Hong Kong    | Hong Kong Int'l Tml (HIT)                          | 70          | Sun    | -           | -      |
| Ningbo         | Ningbo Meishan Island Int'l                        | 07          | Sun    | 08          | Mon    |              |  |             |        |             |        |
| Manzanillo, MX | Manzanillo Operadora De La Cuenca (OCUPA)          | 25          | Thu    | 28          | Sun    |              |  |             |        |             |        |
| Buenaventura   | Sociedad Portuaria Regional De Buenaventura (SPRB) | 34          | Sat    | 35          | Sun    |              |  |             |        |             |        |

→ Eastbound  
→ Westbound