

## THE APL ADVANTAGE

- Reliable and dedicated services that connect the sea ports of Chittagong, Mongla and Dhaka (by rail and river-barge) with the world's major markets
- Extensive feeders connecting Chittagong with Singapore, Colombo and Port Klang, providing links to global destinations
- Availability of D45', GOH and all types of ground equipment, enabling APL to fulfil customer's unique requirements
- Dedicated and experienced customer support representatives to serve your ocean shipping needs
- APL Bangladesh accepts single buyer consolidating business - CFS/CY

## APL Offices

### Chittagong

APL Bangladesh Pvt. Ltd.  
World Trade Center, 5th Floor  
Holding No. 102-103  
Agrabad Commercial Area  
Chittagong-4100, Bangladesh  
Tel: (88) (31) 714 063, (88) (031) 724 907

### Dhaka

APL Bangladesh Pvt. Ltd.  
I-K TOWER, 3rd Floor, Unit D, Plot # CEN(A)-2  
North Avenue, Gulshan-2  
Dhaka-1212, Bangladesh  
Tel: (88) (02) 5881 3705, (88) (02) 5881 3591

### Khulna

APL Bangladesh Pvt. Ltd.  
United Tower, 4th Floor, 4, KDA Avenue  
Khulna Sadar, Khulna, Bangladesh  
Tel: (88) (041) 731 226

### E-mail Addresses:

#### Export:

Customer Service Email:  
Export\_APL\_BA@apl.com;  
APL\_BANGLADESH\_CS\_EXPORT@apl.com

#### Documentation Email:

DOC\_APL\_BA@apl.com;  
APL\_Bangladesh\_DOC\_Export@apl.com

#### Import:

Import Team's Email:  
Import\_APL\_BA@apl.com;  
APL\_Bangladesh\_CS\_Import@apl.com

#### Sales Email:

APL\_SALES\_Bangladesh@apl.com

#### For Khulna:

Export & Import:  
Email: ABUL\_AZAD@apl.com

## APL Contacts

### T Sivakumar

Head Of Commercial  
APL Bangladesh Pvt. Ltd.  
Tel: (88) (02) 881 3705 (Ext-202)  
(88) (02) 881 3591  
E-mail: T\_Sivakumar@apl.com



## APL Overview

APL's presence in Bangladesh dates back to 1973 when it started calling break bulk ships at Chittagong port with PL 480 commodities. Today APL, is one of the biggest names in container shipping in Bangladesh and plays a vital role in supporting global trade & commerce in this country. APL Bangladesh serves customers in a wide-range of industries, through its three offices in Dhaka, Chittagong & Khulna. APL offers multiple weekly services from both Chittagong and Mongla ports as well as Dhaka ICD and Dhaka river terminals.

## Legend

<b>AAX</b> Asia Australia Express	<b>CS1</b> China Southeast Asia Service 1	<b>RSX*</b> Red Sea Express
<b>AS1</b> Asia Subcontinent Express	<b>JSX</b> Japan Straits Express	<b>SKX</b> Setonai Kai Kyushu Express
<b>CIX</b> China India Express	<b>NZE</b> New Zealand Express	<b>WAX*</b> West Asia Express

Westbound port call    Eastbound port call

● **APL Office Locations**

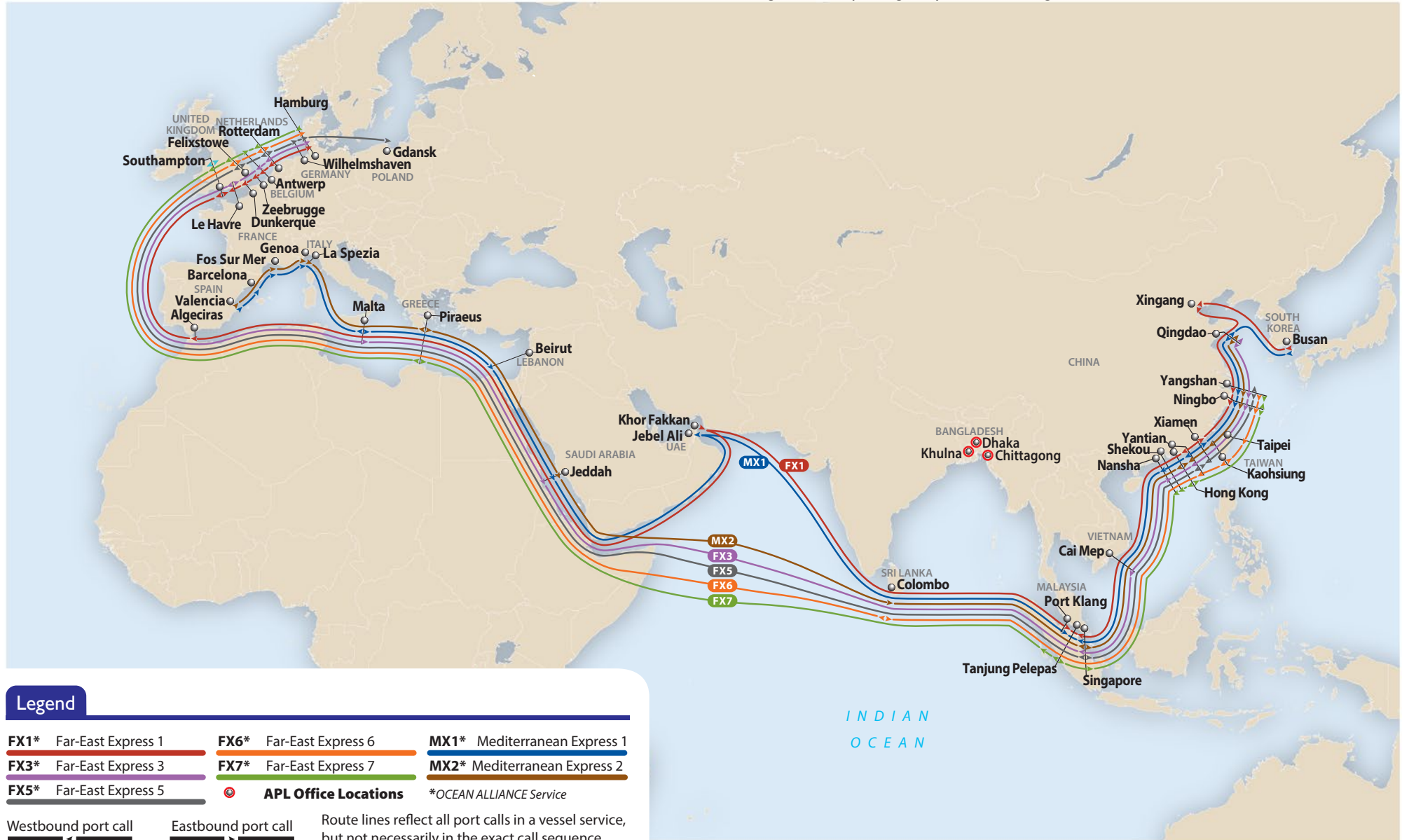
\*OCEAN ALLIANCE Service

Route lines reflect all port calls in a vessel service, but not necessarily in the exact call sequence.

## THE APL ADVANTAGE

- Reliable and dedicated services that connect the sea ports of Chittagong, Mongla and Dhaka (by rail and river-barge) with the world's major markets
- Extensive feeders connecting Chittagong with Singapore, Colombo and Port Klang, providing links to global destinations
- Fast transit time of 22 days from Chittagong to Rotterdam, and 25 days to Felixstowe

- 28 days to Hamburg with FX6 service via Colombo, and 21 days to Antwerp from Port Klang on FX7
- Availability of D45', GOH and all types of ground equipment, enabling APL to fulfil customer's unique requirements
- Dedicated and experienced customer support representatives to serve your ocean shipping needs
- APL Bangladesh accepts single buyer consolidating business - CFS/CY



### Legend

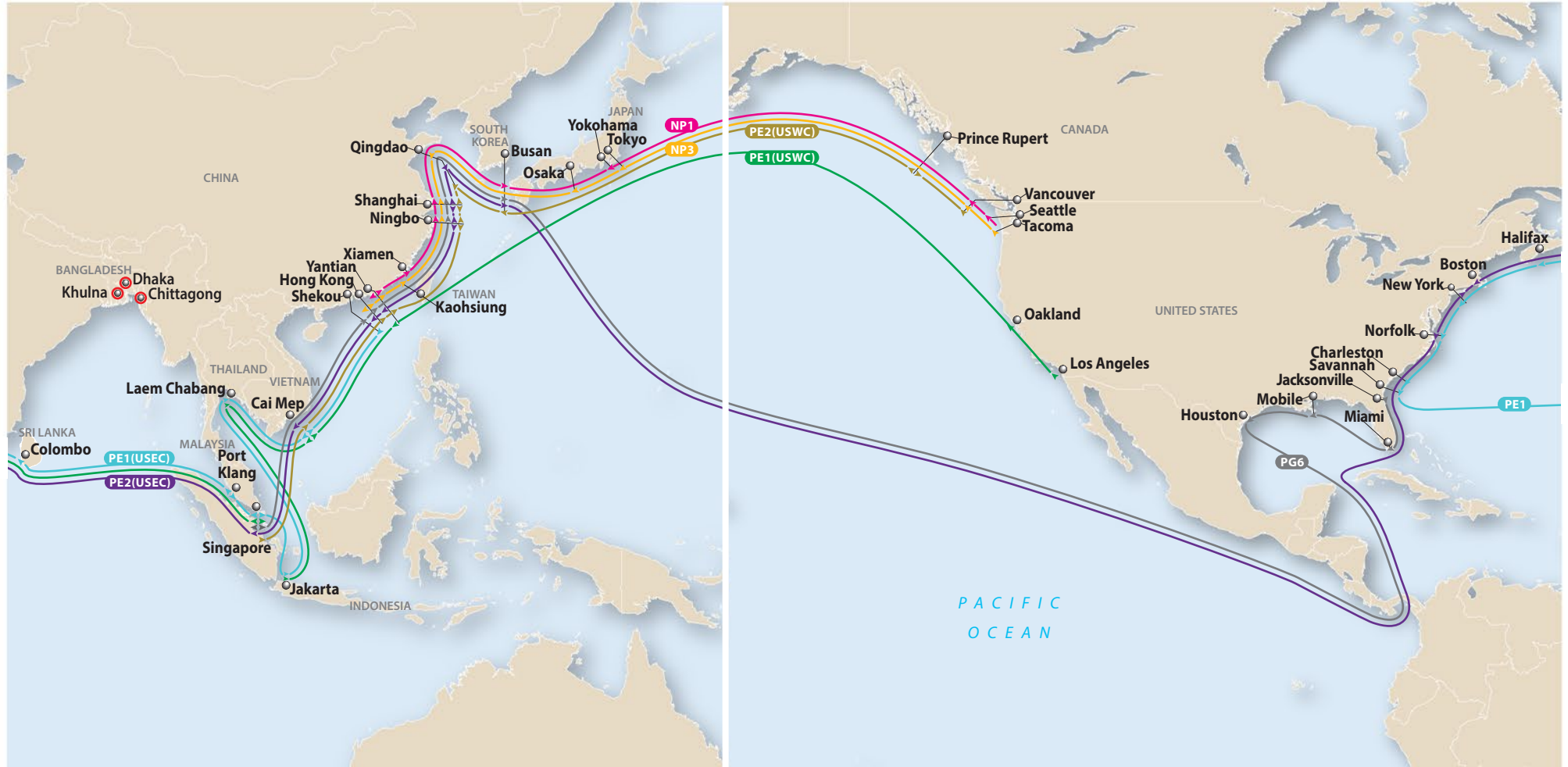
<b>FX1*</b> Far-East Express 1	<b>FX6*</b> Far-East Express 6	<b>MX1*</b> Mediterranean Express 1
<b>FX3*</b> Far-East Express 3	<b>FX7*</b> Far-East Express 7	<b>MX2*</b> Mediterranean Express 2
<b>FX5*</b> Far-East Express 5	<b>APL Office Locations</b>	<i>*OCEAN ALLIANCE Service</i>

Westbound port call      Eastbound port call      Route lines reflect all port calls in a vessel service, but not necessarily in the exact call sequence.

## THE APL ADVANTAGE

- Reliable and dedicated services that connect the sea ports of Chittagong, Mongla and Dhaka (by rail and river-barge) with the world's major markets
- Three sailings weekly from Chittagong to connect PE1 (to U.S. West Coast) at Singapore; and three weekly sailings to connect PE1 (to U.S. East Coast) at Colombo

- Availability of D45', GOH and all types of ground equipment, enabling APL to fulfil customer's unique requirements
- Dedicated and experienced customer support representatives to serve your ocean shipping needs
- APL Bangladesh accepts single buyer consolidating business - CFS/CY



## Legend

- NP1\*** Pacific Northwest - Loop 1
- NP3\*** Pacific Northwest - Loop 3
- PE1\*** Pendulum Loop 1 - USEC
- PE1\*** Pendulum Loop 1 - USWC
- PE2\*** Pendulum Loop 2 - USEC
- PE2\*** Pendulum Loop 2 - USWC
- PG6\*** Pacific Gulf Loop 6
- APL Office Locations**

Westbound port call      Eastbound port call      Route lines reflect all port calls in a vessel service, but not necessarily in the exact call sequence.

\*OCEAN ALLIANCE Service