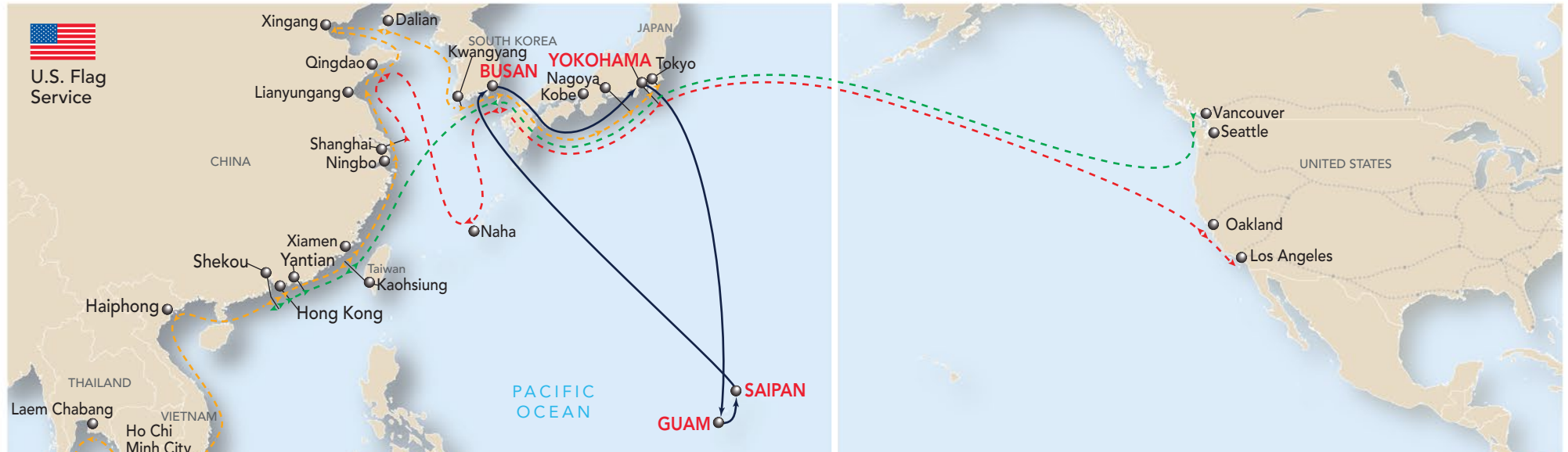


THE APL ADVANTAGE

- Weekly Priority 1 U.S. flag service departures from the U.S. West Coast ports to Guam and Saipan via EX1
- Weekly U.S. flag direct service, connecting Guam and Saipan to APL's global network via Busan and Yokohama
- Dedicated support teams on Guam island and U.S. mainland
- Exclusively APL operated and managed vessels



- - - CI3, CS1, JTV, NS1, WAX
 Route line above shows combined port calls in the five services
- - - EX1
- - - NP4
 Route lines reflect all port calls in a vessel service, but not necessarily in the exact call sequence

Port Rotation

Port	Terminal (Tml)	Transit Day	Arrive	Transit Day	Depart
Busan	Busan New Container Tml	00	Sun	01	Mon
Yokohama	Honmoku Tml D4	04	Thu	04	Thu
Guam	Port Authority of Guam	08	Mon	08	Mon
Saipan	Port of Saipan	09	Tue	09	Tue
Busan	Busan New Container Tml	14	Sun	-	-

Transit Times

Inbound Asia Origin	Inbound U.S. Origin			
	Guam - via Yokohama	Saipan - via Yokohama	Guam - via Busan	Saipan - via Busan
Yokohama	4	5	-	-
Busan	-	-	7	8
Shanghai (EX1)	-	-	12	13
Qingdao (CI3)	-	-	13	14
Kaohsiung (JTV/NS1)	14	15	15	16
Manila (JT6)	19	20	-	-
Singapore (WAX)	-	-	19	20
Laem Chabang (JTV)	20	21	-	-
Port Klang (CS1)	-	-	23	24
Ho Chi Minh (JTV)	-	-	24	25

Outbound				
Busan	Yokohama	Los Angeles (EX1)	Oakland (EX1)	
6	9	20	21	< Saipan
7	10	21	25	< Guam

* Cargo originating from the Pacific Northwest will be drayed to Oakland for vessel loading